

SINI

2014

24th Summer Institute in Nursing Informatics

INFORMATICS ENABLING PATIENT-CENTERED CARE ACROSS THE CONTINUUM

JULY 16-18, 2014



UNIVERSITY of MARYLAND
SCHOOL OF NURSING

Summer Institute in Nursing Informatics
July 16-18, 2014
Baltimore, Maryland

Contents

- 1 Welcome to SINI 2014

- 2 Schedule at-a-Glance

- 4 2014 Planning Committee

- 5 Contact Hour Offerings for SINI
Cyber Café
Accessing the Wireless Network
Accessing Presentations Online

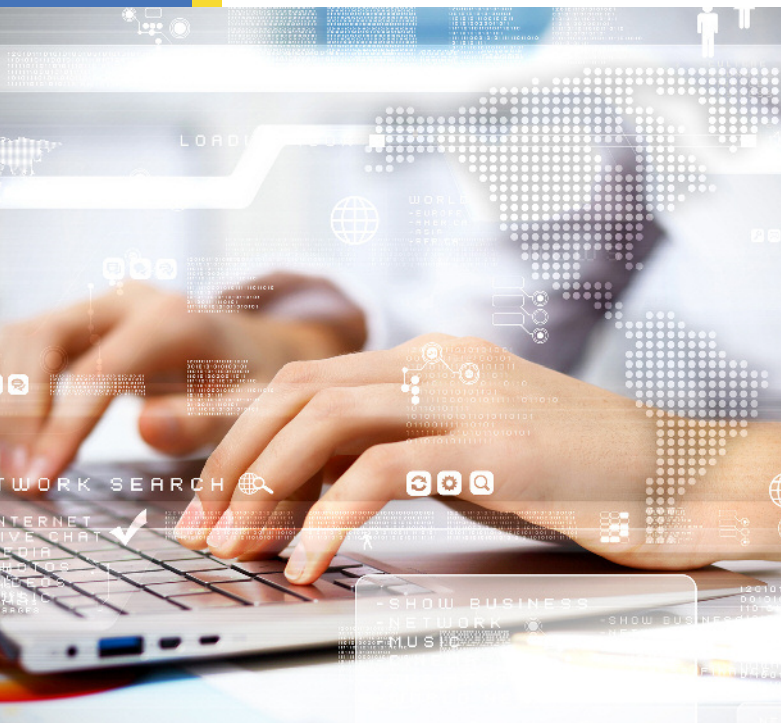
- 6 Conference Overview and Objectives

SINI 2014 PROGRAM SCHEDULE
- 7 Wednesday, July 16
- 10 Thursday, July 17
- 13 Friday, July 18

- 15 Poster Session

- 17 Sponsors and Exhibitors

- 18 Nearby Dining



The conference hosts reserve the right to substitute speakers or topics under unforeseen circumstances.

<http://nursing.umaryland.edu/sini>



SINI 2014

INFORMATICS ENABLING
PATIENT-CENTERED CARE
ACROSS THE CONTINUUM



Welcome to SINI 2014!

Welcome to the 24th Annual Summer Institute in Nursing Informatics. This year's theme, "Informatics Enabling Patient-Centered Care Across the Continuum," is designed to explore emerging trends and possibilities in using informatics to improve care and outcomes.

We will examine informatics tools that aim to place the patient's needs, values, and goals at the center of care in a variety of settings. You will find interesting plenary sessions with national leaders in informatics and exciting podium and poster presentations. Some of you have opted to participate in think tanks where you will combine your knowledge in seeking solutions to difficult problems.

At the Exhibitor Evening, you can learn about technologies and services that may change the way you work. Our book signing will offer you the opportunity to meet the authors of widely-used informatics texts. At the poster session, you can talk in depth with presenters about their work. We hope you'll take advantage of networking opportunities to get to know your peers.

You are a diverse group, representing many regions of the United States and several other countries. All of you have knowledge to share with the rest of us. Let's learn together how to improve our practice and the processes of health care. We are in for a stimulating few days.

The Program Committee, the volunteers, and I are glad you are here, and we look forward to meeting you.

Judy Ozbolt, PhD, RN, FAAN, FACMI, FAIMBE
Visiting Professor and Chair, SINI 2014

SINI 2014

Schedule-at-a-Glance

Throughout this Schedule-at-a-Glance, we have used colors to distinguish the following topical tracks.

Tracks open to participants with any level of expertise:

Think Tanks, intended for experts in nursing informatics:

Track A Integrating and Evaluating Consumer eHealth Approaches in Patient-Centered Care

Track C Challenges in Achieving Interoperability Across Care Settings

Track B New Roles for Clinicians and Informaticians in Patient-Centered Care

Track D Challenges in Data Methods and Analytics Across Care Settings

Ⓜ - Webcast Session

Wednesday • July 16, 2014

| | | |
|-------------------------|--|---|
| 8 – 9:30 a.m. | Registration and Continental Breakfast | UMSON Lobby |
| 8:30 – 9 | Information Session on Informatics at UMSON | Room 150 |
| 8:30 – 9 | SINI for Newcomers | Room 140 |
| 8:30 – 9:15 | Preparing for a Professional Presentation | Room 304 |
| 9:30 – 10 | Welcome and Introductions Ⓜ | Room 130 |
| 10 – 11:15 | Keynote Address: Transforming Health Care Ⓜ | Room 130 |
| 11:30 a.m. – 12:30 p.m. | Concurrent Session 1 1A. Treatment Decision-Making: Education is Not Enough 1B. Partnering for Success: Informatics and Human Factors Engineers 1C. HRSA-ONC Beacon Program to Improve Quality of Health Care for Community Health Centers Through the Use of Health Information Technology Ⓜ 1D. Grand Challenges in the Data-Driven Transformation of Health Care | Room 150 Room 140 Room 130 Room W208 |
| 12:30 – 2 | Lunch (on your own) UMSON Alumni Luncheon | Room 725 |
| 2 – 3 | Concurrent Session 2 2A. Health IT Innovations for Patients and Their Caregivers Ⓜ 2B. Participatory Design and Development of a Patient-Centered Toolkit to Engage Hospitalized Patients and Care Partners in Their Plan of Care 2C. Are We Advancing Meaningful Interoperability? 2D. Using Data from Diverse Sources to Improve Cost, Effectiveness, and Quality | Room 130 Room 150 Room 140 Room W208 |
| 3:15 – 4:15 | Concurrent Session 3 3A. Mobile Apps for Personal Health Monitoring and Management Ⓜ 3B. Integrating and Managing Patient-Generated Information 3C. Coding Nursing Assessments Using SNOMED and LOINC to Support National Standards for Interoperability 3D. Managing and Minimizing the Data Collection Burden on Patients, Clinicians, and Caregivers | Room 130 Room 150 Room 140 Room W208 |
| 4:30 – 7 | Exhibitor Evening: Reception, Book Signing, & Tweet Meet | SMCCC Ballrooms |

Thursday • July 17, 2014

| | | |
|---------------------|---|---|
| 8 – 8:30 a.m. | Continental Breakfast | UMSON Lobby |
| 8:30 – 9:45 | Distinguished Lecture: Big Data and Clinical Decision Support (W) | Room 130 |
| 10 – 11 | Concurrent Session 4 4A-1. Patient-Engaged Human Factors and Ergonomics: Performance Barriers to the Work of Medication Management in Older Heart Failure Patients 4A-2. Mobile Health Intervention Program: Efficacy of High-Risk, Middle-Aged, and Elderly Adults Suffering from Hypertension and Hypercholesterolemia in Taiwan 4B-1. Health IT Adoption in Home Health Agencies (W) 4B-2. Using Mobile Devices to Access Evidence-Based Information in a Rural Health Clinic (W) 4C. Patient Movement from the Battlefield to Home: A Department of Defense Use Case on Interoperability Challenges 4D. EHR Data Quality for Healthcare Analytics: Not Secondary Anymore | Room 150 Room 150 Room 130 Room 130 Room 140 Room W208 |
| 11 a.m. – 1 p.m. | Lunch & Optional Activities Lunch (on your own) Simulation Lab Tours (Sign up at Registration Table) UMSON Living History Museum Open (2nd Floor) | |
| 11:15 a.m. – noon | What We Need Before We Take Watson to the Bedside (Sign up at Registration Table) | Room W202 |
| 11 a.m. – 3:30 p.m. | Poster Setup | SMCCC Ballrooms |
| 1 – 2 | Concurrent Session 5 5A-1. What's Your Health Age – A Health Risk Assessment for Veterans 5A-2. Connected Health Promising Triple Aim Outcomes 5B-1. A Different Approach to Meaningful Use Documentation Education (W) 5B-2. The Emerging Role of Nurse Informaticists in Improving Patient Care Outcomes and Staff Satisfaction (W) 5C. Interoperability and eMeasures of Clinical Quality 5D. Integrating Nursing Data into Big Data | Room 150 Room 150 Room 130 Room 130 Room 140 Room W208 |
| 2:15– 3:15 | Concurrent Session 6 6A. Impact of eHealth Tools 6B. Information for Patient Self-Management (W) 6C. Minnesota 2015 Mandate for Interoperability 6D. Emerging Approaches to Managing and Analyzing Large Data Sets for Longitudinal Study | Room 150 Room 130 Room 140 Room W208 |
| 3:30 – 4:45 | Distinguished Lecture: Consumer eHealth: Emphasizing Health, Not Just Health Care (W) | Room 130 |
| 5 – 6 | Poster Session | SMCCC Ballrooms |

Friday • July 18, 2014

| | | |
|-------------------------|---|---|
| 8 – 9 a.m. | Continental Breakfast | UMSON Lobby |
| 8:15 – 8:45 | Information Session on Informatics at UMSON | Room 150 |
| 9 – 10 | Distinguished Lecture: Nursing Success Stories in Clinical Mobility (W) | Room 130 |
| 10:15 – 11:15 | Concurrent Session 7 7A-1. Successful IT Initiative to Reduce the Rate of Excessive Uterine Contractions During Labor (W) 7A-2. Enhancing Patient Engagement Through Health Information Technology: My HealtheVet and GetWellNetwork (W) 7B-1. Yet Again, Nurses Show Value – Now as Technology Change Agents in an Acute Care Setting 7B-2. University of Maryland eCare's COR 54: The New Kids in the Box 7C. Summary, Priority Issues, and Next Steps Toward Interoperability 7D. Summary, Priority Issues, and Next Steps Toward Using Data and Analytics to Improve Care and Outcomes and Control Costs | Room 130 Room 130 Room 150 Room 150 Room 140 Room W208 |
| 11:30 a.m. – 12:45 p.m. | Commander Lura Jane Emery Lecture: Emerging Technologies to Support Patient-Centered Care (W) | Room 130 |
| 12:45 – 1 | Concluding Remarks and Presentation of the People's Choice Award (W) | Room 130 |

PROGRAM CHAIR

Judy Ozbolt, PhD, RN, FAAN, FACMI, FAIMBE
Visiting Professor
University of Maryland School of Nursing

COMMITTEE MEMBERS

Marion Ball, EdD
Senior Advisor Healthcare Informatics
Healthcare and Life Sciences Institute
IBM Research
Professor Emerita
Johns Hopkins University School of Nursing

Kathleen Charters, PhD, RN, CPHIMS
Clinical Information System Specialist
Defense Health Agency

Melinda Y. Costin, CHCIO, FHIMSS, CPHIMS
Vice President and Chief Information Officer
JPS Health Network

Patricia C. Dykes, PhD, MA, FAAN, FACMI
Senior Nurse Scientist/Program Director Research
Center for Nursing Excellence, Brigham and
Women's Hospital
Chair, AMIA Working Group on Nursing Informatics

Patricia D. Franklin, PhD, RN
Director, Professional Education
Assistant Professor
University of Maryland School of Nursing

Lindsey Hoggle, MS, RD, PMP
Director, Nutrition Informatics
Academy of Nutrition and Dietetics
Co-Chair, AMIA Working Group on Consumer and
Pervasive Health Informatics

Arpad Kelemen, PhD
Associate Professor
University of Maryland School of Nursing

Albert Lai, PhD
Assistant Professor, Department of Biomedical
Informatics
Ohio State University Medical Center
Co-Chair, AMIA Working Group on Consumer and
Pervasive Health Informatics

Mary Etta Mills, ScD, RN, NEA-BC, FAAN
Professor
University of Maryland School of Nursing

Kathryn Lothschuetz Montgomery, PhD, RN
Associate Dean for Strategic Partnerships and
Initiatives
Associate Professor
University of Maryland School of Nursing

Judy Murphy, RN, FACMI, FHIMSS
Deputy National Coordinator for Programs and Policy
Office of the National Coordinator for Health IT
U. S. Department of Health and Human Services

Eun-Shim Nahm, PhD, RN, FAAN
Professor
Specialty Director, Nursing Informatics
University of Maryland School of Nursing

Mary Regan, PhD, RN
Assistant Professor
University of Maryland School of Nursing

Charlotte Seckman, PhD, RN-BC
Assistant Professor
University of Maryland School of Nursing

Sonia Smith, BS
Coordinator, Professional Education
University of Maryland School of Nursing

Nancy Stagers, PhD, RN, FAAN
Professor
University of Maryland School of Nursing

Marisa L. Wilson, DNSc, MHSc, RN-BC
Assistant Professor, Department of Acute and
Chronic Care
Johns Hopkins University

Continuing Education (CE) OFFERINGS FOR SINI:

CE Credits

| | |
|--------------------|----------------------------|
| Wednesday, July 16 | 5.0 credits |
| Thursday, July 17 | 6.5 credits |
| Friday, July 18 | 3.25 credits |
| Total | 14.75 contact hours |

Professional Credit

Up to 14.75 contact hours are awarded to participants who successfully complete SINI 2014 Continuing Nursing Education (CNE) activities. Successful completion requires participants to attend designated CNE activity sessions, complete and submit the attendance verification form (provided in program packet) for those CNE sessions attended, and complete the online SINI Program Evaluation.

Within 2-4 weeks of submitting your completed documents, the University of Maryland School of Nursing (UMSON) will email you a CNE certificate. All documents and requests for CNE certificates must be received within 90 days of this activity.

UMSON is accredited as a provider of continuing nursing education by the American Nurses Credentialing Center's Commission on Accreditation.

CONFLICT OF INTEREST DISCLOSURE

The University of Maryland School of Nursing requires all individuals involved in the planning and presentation of CNE activities to disclose all relevant financial relationships with any commercial interest and that all conflicts of interest be resolved prior to the start of the educational activity. No conflict of interest was discovered to exist with any author, committee member, faculty member, speaker, sponsor, or staff member involved in this program.

CYBER CAFE'

Room 245

Hours of Operation:

| | |
|---------------------|--------------------|
| Wednesday, July 16: | 8 a.m. - 7:30 p.m. |
| Thursday, July 17: | 8 a.m. - 7:30 p.m. |
| Friday, July 18: | 8 a.m. - 2:00 p.m. |

ACCESSING THE WIRELESS NETWORK

UMSON is equipped with a wireless network, which is accessible from anywhere in the building using your laptop or mobile device. For non-UMSON personnel, please use the following user name and password:

Within UMSON

Network Name: UM Conf
User Name: sonconnect
Password: Nur\$ing

Within SMCCC

Network Name: UM Conf
User Name: SMCCConf
Password: SMCGuest

ACCESSING PRESENTATIONS ONLINE

Log on to the SINI website:
<http://nursing.umaryland.edu/sini/presentations>
using the following case-sensitive login information:

User Name: sini
Password: informatics

For presentations not available on the conference website, consult the speaker's contact information provided at the time of presentation and request access to the presentation materials. The website will remain active until August 19, 2014.

JOIN THE CONVERSATION USING #SINI2014

Twitter users are encouraged to tweet about the education and networking at SINI 2014 by using the conference hashtag (#SINI2014) and tagging @marylandnursing. A designated meeting location will be made available during Wednesday evening's Tweet Meet, so that Twitter users can meet each other face to face.

VOLUNTEERS

SINI Conference planners are grateful for our volunteers, who can be identified by their white shirts and the VOLUNTEER ribbon on their name badges. They are here to help and will be glad to answer questions about SINI or the UMSON building.

Please visit the registration desk for further details.

24th Summer Institute in Nursing Informatics

SINI 2014 is packed with evidence-based sessions featuring national leaders and outstanding peer-reviewed presenters. The theme, "Informatics Enabling Patient-Centered Care Across the Continuum," encompasses tested solutions to issues facing your informatics practice.

Informatics professionals are challenged to find new solutions to support patient engagement and patient-centered care across the continuum. Coordinated models of care delivery require informatics tools for patient-centered teamwork, shared planning, close communication among team members (including patients and their lay caregivers), coordination of care, and health coaching. In a collaborative setting, explore how consumer eHealth and pervasive information technologies are changing health care and the management and use of health information.

SESSION TRACKS

Tracks A and B are designed for participants with all levels of expertise. These tracks offer podium presentations with time for questions and discussion. Invited and peer-reviewed speakers in Track A, "Integrating and Evaluating Consumer eHealth Approaches in Patient-Centered Care," offer lessons learned for successful implementation of applications that partner patients with clinicians in managing health. Invited and peer-reviewed speakers in Track B, "New Roles for Clinicians and Informaticians in Patient-Centered Care," describe evolving responsibilities of health care professionals in support of personal health management.

People with expertise in interoperability or data analytics may opt to participate in one of two think tanks. These tracks focus on persistent challenges to optimizing benefits of EHRs. Expert presenters will facilitate group discussions about unresolved challenges. Track C, "Challenges in Interoperability Across Care Settings," examines issues relevant to health information exchange, including integration of patient-generated information. Track D, "Challenges in Data Methods and Analytics Across Care Settings," explores data management and statistical methods for tracking patient progress and outcomes across care settings and assessing the costs and benefits of various modes of care.

NETWORKING OPPORTUNITIES

Wednesday's Exhibitor Evening, Book Signing, and Tweet Meet will give participants an opportunity to learn about products and services useful to nurse informaticians, to talk with the authors of informatics texts (books will be available for purchase), and to meet colleagues with whom they have been exchanging messages. Hors d'oeuvres and beverages will be provided.

POSTER SESSION

The Poster Session on Thursday evening will offer one CE credit. Don't miss this opportunity to review excellent work by peer-reviewed presenters from across the U.S. and around the globe, and to network with participants.

OBJECTIVES

At the conclusion of SINI, participants will be able to:

- Describe ways of using informatics tools to support patient engagement and patient-centered care
- Identify new and evolving roles for clinicians and informaticians in providing patient-centered care across the continuum
- Address ongoing challenges for achieving interoperability, with consideration for devices and apps individuals and families use to monitor and manage their health
- Address ongoing challenges in using data from diverse sources to improve patient care and health outcomes, and to control costs

Throughout this schedule, we have used colors to distinguish the following topical tracks.

Tracks open to participants with any level of expertise:

| | |
|---------|---|
| Track A | Integrating and Evaluating Consumer eHealth Approaches in Patient-Centered Care |
| Track B | New Roles for Clinicians and Informaticians in Patient-Centered Care |

Think Tanks, intended for Experts in nursing informatics:

| | |
|---------|---|
| Track C | Challenges in Achieving Interoperability Across Care Settings |
| Track D | Challenges in Data Methods and Analytics Across Care Settings |

Ⓜ - Webcast Session

Wednesday, July 16, 2014

8 - 9:30 a.m.

Registration and Continental Breakfast

Lobby

8:30 - 9

Information Session on Informatics at the University of Maryland School of Nursing (UMSON)

Room 150

8:30 - 9

SINI for Newcomers

Room 140

8:30 - 9:15

Preparing for a Professional Presentation

Free workshop, all participants are welcome

Room 304

Eun-Shim Nahm, PhD, RN, FAAN
Professor, UMSON

Kathleen Charters, PhD, RN, CPHIMS
Clinical Information System Specialist
Defense Health Agency

0.75 CNE

9:30 - 10

Welcome and Introductions (Plenary) Ⓜ

Room 130

Jane M. Kirschling, PhD, RN, FAAN
Dean and Professor, UMSON

Judy Ozbolt, PhD, RN, FAAN, FACMI, FAIMBE
Visiting Professor, UMSON, and SINI 2014 Program Chair

10 - 11:15

KEYNOTE ADDRESS

Transforming Health Care (Plenary) Ⓜ

Room 130



Philip Fasano
Executive Vice President and Chief
Information Officer, Kaiser Permanente

1.25 CNE

11:30 a.m. - 12:30 p.m.

CONCURRENT SESSION 1

1.0 CNE

1A. Room 150**Treatment Decision-Making: Education is Not Enough**

Donna Berry, PhD, RN, AOCN, FAAN
 Director, Dana Farber Cancer Institute

1B. Room 140**Partnering for Success: Informatics and Human Factors Engineers**

Donna Montgomery, MBA, BSN, RN-BC
 System Director of Nursing/Patient Care Informatics,
 Baylor Health Care System
 C. Adam Probst, PhD
 Senior Human Factors Specialist, BS&WH Office of Patient
 Safety
 Courtney Dalcour, BSN, RN
 Informatics Resource Nurse, Baylor University Medical Center

1C. Room 130**HRSA-ONC Beacon Program to Improve Quality of Health Care for Community Health Centers Through the Use of Health Information Technology** ^W*Nursing Informatics Practice Award Winner*

Anna Poker, RN

1D. Room W208**Grand Challenges in the Data-Driven Transformation of Health Care**

Aubrie Augustus, MHA, RN
 Senior Vice President, Quality Services, JPS Health
 Network

12:30 - 2

Lunch (on your own)

UMSON Alumni Luncheon**Room 725**

1 - 3:30

Exhibitor Registration and Setup**SMCCC Ballrooms**

2 - 3

CONCURRENT SESSION 2

1.0 CNE

2A. Room 130**Health IT Innovations for Patients and Their Caregivers** ^W

Eun-Shim Nahm, PhD, RN, FAAN
 Professor, UMSON
 Specialty Director, Nursing Informatics

2B. Room 150**Participatory Design and Development of a Patient-Centered Toolkit to Engage Hospitalized Patients and Care Partners in Their Plan of Care**

Patricia C. Dykes, PhD, RN, FAAN, FACMI
 Senior Nurse Scientist/Program Director, Research Center
 for Nursing Excellence, Brigham and Women's Hospital

2C. Room 140**Are We Advancing Meaningful Interoperability?**

Joyce Sensmeier, MS, RN-BC, CPHIMS
 Vice President, Informatics, HIMSS


2D. Room W208**Using Data from Diverse Sources to Improve Cost, Effectiveness, and Quality**

Capt. Veronica Gordon, MS, BSN
 Deputy Branch Chief, Health Information Exchange,
 Defense Health Agency

3:15 - 4:15

CONCURRENT SESSION 3

1.0 CNE

3A. Room 130**Mobile Apps for Personal Health Monitoring and Management** 

Holly Jimison, PhD, FACMI
Professor, Northeastern University

3B. Room 150**Integrating and Managing Patient-Generated Information**

Kathleen Charters, PhD, RN, CPHIMS
Clinical Information System Specialist
Defense Health Agency

3C. Room 140**Coding Nursing Assessments Using SNOMED and LOINC to Support National Standards for Interoperability**

Susan Matney, PhD(c), MSN, RN, FAAN,
Medical Informaticist HDD Team, 3M Health
Information Systems

3D. Room W208**Managing and Minimizing the Data Collection Burden on Patients, Clinicians, and Caregivers**

Barbara Frink, PhD, RN, FAAN
Vice President and Chief Nursing Information Officer,
MedStar Health System

4:30 - 7

EXHIBITOR EVENING**SMCCC Ballrooms**

- Hors d'oeuvres and beverages

- **SINI Tweet Meet**

Meet your colleagues who are tweeting about #SINI2014, and put a face to a digital name.

- **Book Signings**

(Located in the Adjunct Hall just outside the SMCCC Ballrooms)

M.J. Ball, J.V. Douglas, et.al
Nursing Informatics: Where Technology and Caring Meet, 4th Edition
London: Springer-Verlag, January 2011

E.H. Shortliffe & J.J. Cimino (Eds.)
Biomedical Informatics: Computer Applications in Health Care and Biomedicine, 4th Edition
London: Springer-Verlag, 2014

Nelson, R., & Staggers, N. (2014)
Health Informatics: An Interdisciplinary Approach
St Louis: Elsevier

Saba, V.K. & McCormick, K.A.
Essentials of Nursing Informatics
McGraw- Hill, 2011

Saba, Virginia, K.
Clinical Care Classification (CCC) System Version 2.5: User's Guide
Springer Publishing, 2012



Thursday, July 17, 2014

8 – 8:30 a.m.**Continental Breakfast****UMSON Lobby****8:30 – 9:45****Distinguished Lecture****Big Data and Clinical Decision Support (Plenary) (W)****Room 130****Martin Kohn, MD, MS, FACEP, FACPE**

Chief Medical Scientist, Care Delivery Systems, Jointly Health

1.25 CNE

10 – 11**CONCURRENT SESSION 4**

1.0 CNE

4A.1 Room 150**Patient-Engaged Human Factors and Ergonomics:
Performance Barriers to the Work of Medication
Management in Older Heart Failure Patients****Robin Mickelson, PhD(c), MS, RN**

Vanderbilt University School of Nursing

Richard Holden, PhDAssistant Professor, Department of Biomedical
Informatics, Vanderbilt University Department of Medicine**Christine Schubert, PhD**Assistant Professor, Loma Linda University School of
Medicine**4A.2 Room 150****Mobile Health Intervention Program: Efficacy of
High-Risk, Middle-Aged, and Elderly Adults Suffering
from Hypertension and Hypercholesterolemia in Taiwan****Wu Meng-Ping, MN**

Taipei City Hospital, Chung-Hsin Branch

Chang Po-Lun, PhD

National Yang-Ming University

Lee Chien-Hsien, MD

National Yang-Ming University

Yu Wen-Ruey, MD

Taipei City Hospital, Yang-Ming Branch

Kao Mu-Jung, MD

Taipei City Hospital, Yang-Ming Branch

4B.1 Room 130**Health IT Adoption in Home Health Agencies (W)****Gunes Koru, PhD**Associate Professor, University of Maryland, Baltimore
County (UMBC)**Dari Alhuwail**

PhD Student, UMBC

Anthony Norcio, PhD

Professor of Information Systems, UMBC

Max Topaz, RN, ABD

PhD Student, University of Pennsylvania School of Nursing

Mary Etta Mills, ScD, RN, NEA-BC, FAAN

Professor, UMSON

4B.2 Room 130**Using Mobile Devices to Access Evidence-Based
Information in a Rural Health Clinic (W)****Heather Carter-Templeton, PhD, RN-BC**Assistant Professor, University of Alabama-Capstone
College of Nursing**Lin Wu, MLIS, AHIP**Associate Professor & Health Sciences Librarian,
University of Tennessee Health Science Center

4C. Room 140**Patient Movement from the Battlefield to Home:
A Department of Defense Use Case on Interoperability
Challenges**

Angela Icaza, MS, MBA, RN-BC
Army Informatics Nurse Specialist, Deployment Division for
the DoD Healthcare Management Systems Modernization

Patrick Shannon, MS, RN, CPHIMS

Miko Watkins, MSN, MS, RN-BC

Elizabeth Fleischer, MSN, BS, RN-BC, NREM

Stephanie Raps, RN

4D. Room W208**EHR Data Quality for Healthcare Analytics: Not
Secondary Anymore**

Andrew Post, MD, PhD
Clinical Informatics Architect and Assistant Professor,
Department of Biomedical Informatics, Emory University

11 a.m. - 1 p.m.

Lunch (on your own)

Simulation Lab Tours

Sign up at registration table

UMSON Living History Museum Open

2nd floor

11:15 a.m. - noon**What We Need Before We Take Watson to the Bedside**

Sign up at registration table

Eliot Siegel, MD, FACR, FSIIM
Professor, University of Maryland School of Medicine
Adjunct Professor, Bioengineering, University of Maryland,
College Park
Adjunct Professor, Computer Science, UMBC

Room W202

1 - 2 p.m.**CONCURRENT SESSION 5**

1.0 CNE

5A.1 Room 150**What's Your Health Age - A Health Risk Assessment for
Veterans**

Heidi Martin, MA, BSN
Clinical Informaticist, Department of Veterans Affairs

Jeffrey Sartori, MS, RN
Informatics Clinical Analyst, Department of Veterans Affairs

5A.2 Room 150**Connected Health Promising Triple Aim Outcomes**

Susan Hull, MSN, RN
CEO, WellSpring Consulting

5B.1 Room 130**A Different Approach to Meaningful Use Documentation
Education** ^W

Lindsay Donnellan, BSN, RN, CPN
Clinical Education and Informatics Specialist
Boston Children's Hospital

Sara Gibbons, MSN, RN-BC, CPN
Clinical Education and Informatics Specialist
Boston Children's Hospital

Cassandra Mombrun, MSN, RN
Clinical Education and Informatics Specialist
Boston Children's Hospital

Suzanne Burstein, BSN, RN
Clinical Education and Informatics Specialist
Boston Children's Hospital

Paige Polak, BS
Quality Improvement Data Analyst
Boston Children's Hospital

1 - 2 p.m.

CONCURRENT SESSION 5 *(continued)***5B.2** Room 130**The Emerging Role of Nurse Informaticists in Improving Patient Care Outcomes and Staff Satisfaction** ^W

Romina Elias, MSN, RN-BC
Clinical Informaticist, Assistant Nurse Manager
White Plains Hospital

Grant Campbell, MSN, RN
Senior Director Clinical Services, Zynx Health

5C. Room 140**Interoperability and eMeasures of Clinical Quality**

Kathleen Charters, PhD, RN, CPHIMS
Clinical Information System Specialist
Defense Health Agency

5D. Room W208**Integrating Nursing Data into Big Data**

Ann Tinker, MN, RN
Vice President, Executive Engagement, Healthcare Quality
Catalyst, Inc., Intermountain Health Care

2:15 - 3:15

CONCURRENT SESSION 6

1.0 CNE

6A. Room 150**Impact of eHealth Tools**

Marty Minniti, BS, RN
CEO, Skilled Nursing Staffing and Search

6B. Room 130**Information for Patient Self-Management** ^W

Leslie Kelly Hall
Senior Vice President, Healthwise

6C. Room 140**Minnesota 2015 Mandate for Interoperability**

Bonnie Westra, PhD, RN, FAAN, FACMI
Associate Professor and Director, Center for Nursing
Informatics, University of Minnesota School of Nursing

Martin LaVenture, PhD, MPH, FACMI
Director, Office of Health Information Technology in MDH,
Minnesota Department of Health

6D. Room W208**Emerging Approaches to Managing and Analyzing Large Data Sets for Longitudinal Studies**

Beverly Bell, MHA, RN, CPHIMSS, FHIMSS
Vice President, Implementation and Consulting
Siemens Healthcare

3:30 - 4:45

Distinguished Lecture (Plenary) ^W**Consumer eHealth: Emphasizing Health, Not Just Health Care**

Room 130

Ellen Makar, MSN, RN-BC, CPHIMS, CCM, CENP
Senior Policy Advisor, U.S. Department of Health and Human
Services, ONC Office of Consumer eHealth

1.25 CNE

5 - 6

Poster Session

SMCCC Ballrooms

See pages 15-16 of this program for complete Poster
Session listing.

1.0 CNE

Friday, July 18, 2014

8 - 9 a.m.

Continental Breakfast

UMSON Lobby

8:15 - 8:45

Information Session on Informatics at UMSON

Room 150

9 - 10

Distinguished Lecture (Plenary) (W)

Nursing Success Stories in Clinical Mobility

Room 130

Molly K. McCarthy, MBA, RN

Chief Nursing Strategist

Microsoft U.S. Health and Life Sciences

1.0 CNE

10:15 - 11:15

CONCURRENT SESSION 7

1.0 CNE

7A.1 Room 130

Successful IT Initiative to Reduce the Rate of Excessive Uterine Contractions During Labor (W)

Nursing Informatics Research Award Winner

Kari Bunting, MS, RNC-OB, C-EFM

Clinical Nurse Specialist, Labor and Delivery

MedStar Franklin Square Medical Center

Professional Development Specialist

MedStar Franklin Square Medical Center

Samuel Smith, MD

Executive Chairman

MedStar Franklin Square Medical Center

Emily Hamilton, MD

SVP Clinical Research, Perigen and McGill University

7A.2 Room 130

Enhancing Patient Engagement Through Health Information Technology: My HealthVet and GetWellNetwork (W)

Linda Keldsen, MS, MBA-HC, RN, CPHRM, VHA-CEM

Director, Veterans Health Education, Nursing

Affiliations, My HealthVet & GetWellNetwork

VA Maryland Health Care System

7B.1 Room 150

Yet Again, Nurses Show Value - Now as Technology Change Agents in an Acute Care Setting

Weiwen Wang, DNP, MSN, RN

Assistant Professor,

University of Pittsburgh School of Nursing

Elizabeth LaRue, PhD

Assistant Professor, University of Pittsburgh

7B.2 Room 150

University of Maryland eCare's COR 54: The New Kids in the Box

Ariel de Vera, BSN, RN, CCRN

Senior Clinical Nurse II, University of Maryland eCare

7C. Room 140

Summary, Priority Issues, and Next Steps Toward Interoperability

Marisa Wilson, DNSc, MHSc, RN-BC

Assistant Professor, Department of Acute and Chronic Care

Johns Hopkins University School of Nursing

7D. Room W208

Summary, Priority Issues, and Next Steps Toward Using Data and Analytics to Improve Care and Outcomes and Control Costs

Melinda Costin, CHCIO, FHIMSS, CPHIMS

Vice President and CIO, JPS Health Network

Judy Ozbolt, PhD, RN, FAAN, FACMI, FAIMBE

Visiting Professor, UMSON and SINI 2014 Program Chair

11:30 a.m. – 12:45 p.m.

Commander Lura Jane Emery Lecture

Emerging Technologies to Support Patient-Centered Care (Plenary) ^W

Room 130



Patricia Flatley Brennan, PhD, RN, FAAN, FACMI

Professor of Nursing and Industrial Engineering
School of Nursing and College of Engineering, University of Wisconsin-Madison

SINI organizers acknowledge the support of the Endowment Fund of the Commander Lura Jane Emery Seminar Series for Nursing Practice for its generous sponsorship of the endnote address.

1.25 CNE

12:45 – 1

Concluding Remarks and Presentation of the People's Choice Award ^W

Room 130

“My experience at SINI has inspired and challenged me to make a difference in my unit/organization”

Bobbie Glaser, BSN RN CCRN
Staff Nurse/Informatics Project Leader
Zablocki VA Medical Center



“SINI provides all nurses and health care providers an opportunity to join the future of health care delivery.”

Sandra Genrich, PhD, RN
Adjunct Professor
Stevenson University

Poster Session

Be sure to vote for your favorite poster for the People's Choice Poster Award! Turn in your ballot at the registration desk before the Endnote Presentation.

1. **Telenursing – An Evolving World of Care**
Rachel Albert, PhD
 2. **Game Based Learning to Teach Electronic Health Record (EHR) Use**
Karen Beach, BSN, RN-BC
Toni Hebda, PhD, RN-BC, MSIS, CNE
Dee McGonigle, PhD, RN, CNE, FAAN, ANEF
Eric Bauman, PhD, RN
Carolyn Sipes, PhD, RN-BC, CNS, APN, PMP
 3. **Submission Process for Requesting SNOMED CT Clinical Concepts**
Lindy Buhl, BSN, RN
Susan Matney, MSN, RN
-
- SINI 2014 Outstanding Research Poster Award Winner**
4. **Usability Testing and Comparison of Six Electronic Nursing Record Systems: User-Task-System Evaluation**
Insook Cho, PhD
Won Ja Choi, MS
Woan Heui Choi, MS
-
5. **Nursing Informatics Driving Patient Outcomes**
Marta Cook, BSN, RN
Stacey Carmichael, BSN, RN
 6. **Case Study: Implementation of Electronic Health Record Using Rogers Diffusion of Innovation**
Rosario Estrada, DNP, RN-BC, CPN
Gerti Heider, PhD, MSN, APN, GNP-BC
 7. **Examining the Relationship Between Nursing Informatics Competency and Evidence-Based Practice Competency Among Acute Care Nurses**
Susanne Fehr, MS, RN-BC, NE-BC
 8. **A Hybrid Learning Approach to Patient Education for Blood and Marrow Transplantation**
Cheryl Fisher, EdD, RN-BC
Claiborne Miller-Davis, MS
Mike Krumlauf, BSN
Nonniekay Shelburne, MS, CRNP, AOCN
Gwenyth Wallen, PhD
 9. **Nursing Informatics: ANA Scope and Standards of Practice**
Paulette Fraser, MS, RN-BC
 10. **Connecting CCC to SNOMED CT and LOINC in a Terminology Server**
Tiffany Harman, RN
Susan Matney, MSN
 11. **Gap Analysis of SNOMED CT Content Coverage for a Decision Support System**
Rachel Howe, BSN, RN
Susan Matney, MSN
 12. **Integrating mHealth Into Patient-Provider Chronic Disease Management – a Sociotechnical Perspective. Challenges and Lessons Learned from the Pocket PATH Synergy**
Taya Irizarry, MSN, RN
Annette De Vito Dabbs, PhD, RN, FAAN
 13. **Targeting Patient Outcomes: Increasing Accuracy of Documentation**
Melissa Kolod, BS
Cynthia Lundberg, MSN, RN
Jennifer Kingery, BSN, RN
 14. **Leveling Informatics Online Education Across Baccalaureate, Master's, and Doctoral Programs in a School of Nursing**
Heidi Landry, DNS, RN
Michael Landry, DNS, RN
 15. **Transcultural Analysis of Medical Device Alarm Trepidations: A Nursing Perspective and New Theory Proposal**
Colleen Lindell, MHSA, RN
 16. **Using HIT to Facilitate Transitions of Care**
Cristina Mahabir, MS, RN
Gilad Kuperman, MD, PhD
Ruben Lantigua, MSN, RN

Poster Session continued on next page

Poster Session (continued)

2014 SINI Outstanding Practice Poster Award Winner

17. Improving Depression Screening Using CDS and Patient Access to Info Using PHRs

Cristina Mahabir, MS, RN
 Gilad Kuperman, MD, PhD
 Ruben Lantigua, MSN, RN
 Nebojsa Mirkovic, PhD, MPH

18. mHealth: Report of the NI2014 Post-Conference on Mobile Health

Susan Newbold, PhD, RN-BC, FAAN, FHIMSS, CHTS-CP

19. An Interdisciplinary Approach to Clinical Documentation Across the Care Continuum

Jayne O'Leary, RN
 Catherine Galla, MSN

20. Health Center-Controlled Networks: Advancing Health Care Quality Through Health Information Technology at Community Health Centers

Anna Poker, RN

21. Nurse Informaticist as Consumer eHealth Advocate

Elaine Polinak, MSN

22. Mitigating Outages of Digital Phones

Rebecca Qualey, MA, RN

23. Tailoring a Systems Learning Curriculum for New Clinicians Across the Care Continuum

Kristy Reynolds, MSN, MBA, RN, CPON, OCN
 Jill Vickers, MSN, RN
 Jamie Douglas, RN
 Ashley Sediqzad, RN

24. Promoting Patient-Centered Care Through the Practical Application of Informatics Concepts in a Baccalaureate Nursing Curriculum

Charlotte Seckman, PhD, RN-BC

25. Increasing Communication with Referring Providers to Enhance Patient-Centered Care

Diane Skojec, DNP, CRNP
 Bernadette Naquin, BSN, RN, CWCN
 Christal Moore, MHA, MBA, FACHE

26. Leveraging a Tele-ICU Program to Provide Palliative Care to All ICU Patients: A Pilot Study

Courtney Stear, BSN, RN



“SINI not only helped me grow my overall knowledge of nursing informatics, but helped me better understand informatics in my own organization. A definite win-win!”

Holly Nunns, BSN, RN
 Clinical Informatics Analyst Nursing and
 Patient Care Informatics
 Baylor Health Care System Dallas, TX

We are grateful for the generous support of our SINI 2014 Sponsors and Exhibitors.

BRONZE SPONSORS



HIMSS (Healthcare Information and Management Systems)

Christel Anderson
www.himss.org
canderson@himss.org
33 W. Monroe Street, Suite 1700
Chicago, IL 60603
Phone: 312-915-9520



ESD

www.contactesd.com
Brittanie Begeman
bbegemane@contactesd.com
4352 W. Sylvania Ave
Toledo, OH 43623
Phone: 419-841-3179

Financial support has been provided by the conference sponsors as follows: Bronze sponsor - \$5,000 contribution

EXHIBITORS

American Nurses Credentialing Center (ANCC)

certification@ana.org
8515 Georgia Avenue, Suite 400
Silver Spring, MD 20910
Phone: 1-800-284-2378
Phone: 301-628-5000

American Nursing Informatics Association

ANIA@ajj.com
200 East Holly Avenue
Sewell, NJ 08080
Phone: 866-552-6404

API Healthcare - A GE Healthcare Company

colette.cleary@apihealthcare.com
Colette Cleary
1550 Innovation Way
Hartford, WI 53027
Phone: 262-673-6815

MEDITECH, Inc. (Medical Information Technology, Inc.)

cberkel@meditech.com
Craig Berkel
MEDITECH Circle
Westwood, MA 02090
Phone: 781-774-3997

Newbold Consulting

sknewbold@comcast.net
Susan K. Newbold
429 Woodcrest Lane
Franklin, TN 37067
Phone: 443-562-0502

University of Maryland School of Nursing Admissions Office

www.nursing.umaryland.edu/
admissions
tjones@son.umaryland.edu
Tracie Jones
655 W. Lombard Street
Baltimore, MD 21201
Phone: 410-706-7613

Welch Allyn, Inc.

kathy.garofalo@welshallyn.com
Kathy Garofalo
4341 State St. Rd.
Skaneateles Falls, NY 13151
Phone: 315-685-4442

Wolters Kluwer Health/Lippincott Williams & Wilkins

charles.vint@wolterskluwer.com
Charles Vint
957 Joshua Tree Court
Owings Mills, MD 21117
Phone: 410-241-0304

Café CulinArt

Located in the Southern Management Corporation Campus Center (SMCCC) adjacent to the School of Nursing. Please wear your School of Nursing conference badge.

Camden Pub

Turn left after exiting the School of Nursing and continue on West Lombard Street to the corner. Turn left onto Penn Street. Continue one block and turn left onto W. Pratt Street. The restaurant is located at 647 W. Pratt Street.

Frank & Nic's West End Grill

Turn right after exiting the School of Nursing and continue on West Lombard Street to the corner of Greene Street. Turn right on Greene Street. Walk one block and turn left onto West Pratt Street. The restaurant is located at 511 W. Pratt Street.

Luna del Sea

Turn right after exiting the School of Nursing and continue on West Lombard Street to the corner of Greene Street. Turn right on Greene Street. Walk one block and turn left onto West Pratt Street. Walk three blocks toward the Inner Harbor to 300 W. Pratt Street.

Peace & A Cup of Joe

Turn left after exiting the School of Nursing and continue on West Lombard Street to the corner. Turn left onto Penn Street. Continue one block and turn right onto West Pratt Street. The café is located at 713 W. Pratt Street.

The Penn Restaurant

Turn left after exiting the School of Nursing and continue on West Lombard Street to the corner. Turn left onto Penn Street. Continue one block to West Pratt Street. The Penn Restaurant is located on the corner of Penn Street and Pratt Street.

Potbelly Sandwich Works

Turn right after exiting the School of Nursing and continue on West Lombard Street to the corner of Greene Street. Turn right on Greene Street. Walk one block and turn left onto West Pratt Street. 519 W. Pratt Street is on the right (located in the Greenhouse Apartments building).

University of Maryland Medical Center (UMMC)

A variety of quick service dining options are located inside UMMC, directly across Lombard Street from the School of Nursing. Turn right after exiting the School of Nursing and continue on West Lombard Street to the corner. Turn left onto Greene Street enter the hospital.

In the Hospital - First Floor South Building

- UMMC Cafeteria (Courtyard Cafe)
- Subway
- Mamma Ilardo's Pizzeria
- Cypriana Cafe (Greek cuisine)

In the Hospital - First Floor Atrium

- Au Bon Pain
- Rx Brew, Starbucks
- The Great Cookie

Vending Machines

Located in the basement of the School of Nursing. Take the elevators on the west side of the School of Nursing to the basement level.

A FRESH APPROACH TO FULL-CYCLE HIT IMPLEMENTATION & SUPPORT



MODERN HEALTHCARE
BEST PLACES TO WORK 2014

We offer:

- Consultant-Centric Workplace
- Schedule & Location Flexibility
- Travel Opportunities
- Travel Expenses Paid Upfront
- Competitive Pay
- Staff Augmentation | Project Management
- Go-Live Support | Automated Testing Solutions
- Clinical Documentation Improvement | Optimization
- Physician Help Desk Support | MyChart Support
- Staff Training | Meaningful Use

esdontheweb.com | (419) 841.3179

HIMSS
transforming health through IT™



HIMSS Nursing Informatics Community

You're committed to improving patient care and transforming health through IT.

We share your commitment.

Visit our booth and join forces with HIMSS to advance our cause...and your career.

www.himss.org/nursing

SAVE THE DATE!

SINI 2015

Realizing the Benefits: Health Information Technology and Patient Care

July 22-24, 2015

Preconference Tutorial - July 20-21

Keynote: Informatics Supporting the Care of the Underserved

Suzanne Bakken, PhD, RN, FAAN, FACMI

Director, Center for Evidence-based Practice in the Underserved
Alumni Professor of Nursing and Professor of Biomedical Informatics
Columbia University

Endnote: Data Visualization for Population Health

Isaac S. Kohane, MD, PhD
Professor of Pediatrics and Health Sciences Technology
Harvard Medical School

<http://nursing.umaryland.edu/sini>

SINI



CELEBRATING

25

YEARS OF
EXCELLENCE

IN NURSING INFORMATICS



NURSING INFORMATICS

Complete Your Advanced Degree!

The University of Maryland School of Nursing (UMSON) was the first nursing school in the world to offer a master's specialty in informatics and a doctoral degree with a focus on informatics. For more than two decades, UMSON has offered its renowned informatics programs, and today, it remains a leader in nursing informatics educational offerings. The informatics curriculum is continually updated in response to emerging technology and the needs of the health care system.

Master's of Science (MS) and Post-Master's (Post-MS):

- MS: 40 credits
- Certificate: 19 credits
- MS/MBA
- Highly individualized course plans
 - Full- or part-time
 - Comprehensive practicum

Full online option available

Doctoral programs with a focus in nursing informatics:

- PhD
- Doctor of Nursing Practice
- Completely in online format
(asynchronous and synchronous formats)

The Nursing Informatics MS specialty participates in the Academic Common Market, meaning that **students who reside in member states of the Southern Regional Education Board may request to pay in-state tuition if there is no nursing informatics program offered in a public university in their home state.**

For more information, email:

informatics@son.umaryland.edu